

# Lessard-Sams Outdoor Heritage Council

## Fiscal Year 2017 / ML 2016 Request for Funding



**Date:** June 03, 2015

**Program or Project Title:** Lower Wild Rice River Corridor Habitat Restoration -- Phase II

**Funds Requested:** \$4,150,000

**Manager's Name:** Kevin Ruud

**Title:** Administrator

**Organization:** Wild Rice River Watershed District

**Address:** 11 East 5th Avenue

**City:** Ada, MN, MN 56510

**Office Number:** 218-984-5501

**Email:** kevin@wildricewatershed.org

**Website:** www.wildricewatershed.org

**County Locations:** Norman

**Regions in which work will take place:**

- Prairie

**Activity types:**

- Protect in Easement
- Protect in Fee

**Priority resources addressed by activity:**

- Wetlands
- Forest
- Prairie
- Habitat

### Abstract:

This is the second phase of a project to restore 23 channelized river miles to 50 miles of natural stream channel and protect and restore 1,200 acres of floodplain forest, wetland, and grassland habitat along the Wild Rice River.

### Design and scope of work:

In the past 100 years, many rivers and streams in the Red River Basin were straightened, ditched, cleared, and snagged with a goal of improving drainage. These activities destroyed hundreds of miles of aquatic habitat and eliminated thousands of acres of riparian forest, wetland and grassland habitat. These habitat losses continue today and have directly resulted in reduced fish and wildlife populations within the channelized reaches of river corridors.

The Wild Rice River is a major Red River tributary, with a drainage area encompassing approximately 1,560 square miles. The Red River Drainage Commission channelized the Lower Wild Rice River in the late 1800's with further channel "improvement" completed in the 1950's. These projects converted over 50 miles of natural sinuous channel and floodplain corridor into a 23 mile straightened channel. The channelized reach of the Wild Rice River currently provides little functional aquatic or riparian corridor habitat and reduces connectivity between the lower 49 miles of the river to the upstream 130 miles. Agriculture is the primary land use in this area, with only small remnants of natural habitat remaining. Restoration of this river corridor is the highest rated project on the Minnesota Department of Natural Resources stream restoration priority list (attached). The Wild Rice Watershed District, in partnership with federal, state, and local agencies has developed a long term plan to restore the Wild Rice River. Acquisition of the corridor is the first phase on this long-term project, which will restore 50 miles of natural channel and over 6,500 acres of riparian forest, wetland, and prairie habitat. The long-term vision for the project includes establishment of a ½-mile wide protected corridor along the river channel, setting back existing ditch banks from the river channel, reconnecting oxbows and construction of natural river habitat, and restoration of perennial forest, wetland, and prairie plant communities. The stream rehabilitation will be based on the principles of natural channel design with

an understanding of the hydrology and fluvial geomorphology at the site. The enhanced stream and associated riparian wetlands will improve habitat for Channel Catfish, Lake Sturgeon, Northern Pike, Smallmouth Bass, Walleye, and the other 50+ fish species documented in the Wild Rice River.

In addition to the fish habitat directly provided in the 50 mile restored stream channel, the associated floodplain forest, wetland, and grassland habitat will provide critical wildlife habitat for game species, including upland birds, migratory waterfowl, and deer. Non-game species will also benefit from protection and restoration of this habitat. The Minnesota Prairie Conservation Plan lists restoration of channelized prairie river segments and cultivation of lands immediately adjacent to streams and ditches as critical challenges. This project addresses both of these concerns. In addition, the upstream portion of the project area lies within the corridor-based conservation area targeted to address connectivity of prairie plants and animals. Currently, 46% of the 6,359 acres within the primary Wild Rice River Corridor is classified as cultivated land (see attached Land Use document). The second most common type of land cover is wooded wetlands; accounting for 35% of the lands within the corridor.

Phase 2 of this project is targeted land acquisition. As part of the long term plan, the river has been divided into Reaches A to F. This funding request will target acquisition to Reach C of the corridor. This reach was selected for Phase 2 due to expressed landowner interest and the high percentage of cultivated land within the reach. Of the 1,425 acres within the primary corridor of this reach, 947 acres (67% ) are classified as cultivated crops. The other primary land classifications within this reach are woody wetland (249 acres) and open water (149 acres). While land acquisition will be targeted to Reach C, any other opportunities to acquire and protect lands within the main corridor (A-F) and adjacent lands to the primary corridor in Reach C will also be considered. A total of 1,196 acres of land is targeted for acquisition in this phase of the project (921 acres within the primary corridor of Reach C and 275 acres adjacent land and opportunities for acquisition in other reaches).

The Wild Rice River Watershed District will lead this project. Numerous partners will be needed to ensure success. In this land acquisition phase of the project, the local Soil and Water Conservation District and Natural Resources Conservation Service will be critical to success. The largest impediment to acquiring land in this corridor is limiting landowner options for easements. LSOHC funding will strengthen the number of options available for the watershed district to acquire land in this targeted corridor.

In future channel restoration oriented phases of the project, the MNDNR and U.S. Army Corps of Engineers will provide technical assistance, funding, and project monitoring to evaluate outcomes. The watershed district will be responsible for final design, engineering, and construction of the project. If funding for this corridor rehabilitation is not secured, the opportunity to rehabilitate this reach of the Wild Rice River Corridor will be lost and it will remain a poor functioning channelized river segment.

## **Crops:**

Will there be planting of corn or any crop on OHF land purchased or restored in this program - **No**

## **How does the request address MN habitats that have: historical value to fish and wildlife, wildlife species of greatest conservation need, MN County Biological Survey data, and/or rare, threatened and endangered species inventories:**

This project is the land acquisition phase of a long term project that will restore 50 miles of river and over 6,500 acres of habitat for associated fish and wildlife communities. The Wild Rice River and associated prairie and forest lowland habitats were identified as key habitats for species of greatest conservation need in the Red River Prairie ecoregion. Key among aquatic species is the Lake Sturgeon, a species of special concern. The Wild Rice River provides sturgeon habitat and restoration of the river will help ensure successful reestablishment of sturgeon populations in the Red River basin. This project will also likely benefit mussel and insect populations in the Wild Rice River. Two species of caddisfly and two species of mussels, black sandshell and fluted-shell are listed as species of special concern are known to be present in the upstream reaches of the Wild Rice River. Acquisition and restoration of the stream and associated riparian wetlands will also improve habitat for gamefish and more than 50 other fish species present in other reaches of the Wild Rice River. One Minnesota County Biological Survey site of moderate biodiversity significance is located within the Lower Wild Rice River Corridor.

## **What is the nature of urgency and why it is necessary to spend public money for this work as soon as possible:**

Land acquisition is the critical first step in the restoration of over 6,500 acres of riparian habitat and converting 23 miles of ditch to over 50 miles of river channel. Once land acquisition is complete, Army Corps of Engineers will likely contribute much of the channel restoration implementation.

## **Describe the science based planning and evaluation model used:**

The restoration of the Lower Wild Rice River corridor is the highest priority project on the state river restoration priority list. The Minnesota Prairie Plan also lists restoration of channelized prairie river segments and cultivation of lands immediately adjacent to streams and ditches as critical challenges.

**Which sections of the Minnesota Statewide Conservation and Preservation Plan are applicable to this project:**

- H2 Protect critical shoreland of streams and lakes
- H6 Protect and restore critical in-water habitat of lakes and streams

**Which other plans are addressed in this proposal:**

- Minnesota Prairie Conservation Plan
- Tomorrow's Habitat for the Wild and Rare

**Which LSOHC section priorities are addressed in this proposal:**

**Prairie:**

- Protect, enhance, or restore existing wetland/upland complexes, or convert agricultural lands to new wetland/upland habitat complexes

**Relationship to other funds:**

- Not Listed

**How does this proposal accelerate or supplement your current efforts in this area:**

The Watershed District has a long interest in restoration of the Wild Rice River Corridor. This project was initiated in the 1990's and a Feasibility Study was completed by the Corps of Engineers in 2005. Lack of funding has stalled implementation of this plan. Funding through the LSOHC is critical to accelerating and completing the land acquisition phase of this project. Securing funds now will allow the watershed district and partners to create a package of acquisition options for landowners to choose from and will ensure leveraging of available federal conservation program funds. If this LSOHC funding is not secured, the watershed district will continue to work on the project in small scale pieces as opportunities and funding become available.

**Describe the source and amount of non-OHF money spent for this work in the past:**

Appropriation Year	Source	Amount
Multiple Years	Wild Rice Watershed District	1,270,000
Multiple Years	US Army Corps of Engineers	1,270,000

**How will you sustain and/or maintain this work after the Outdoor Heritage Funds are expended:**

The Wild Rice River Watershed District will be responsible for all maintenance of this project. Sustainability and maintenance of this channel restoration is required within watershed district law (Minnesota Statutes 103D). Long term project maintenance is authorized and funded through established watershed district construction and maintenance funds. This project is designed to mimic natural, stable stream channels and should require less maintenance than the current channelized stream segment.

The watershed district is leading the land acquisition, project development, and engineering of this project with full cooperation of a watershed-based team composed of landowners and representatives of local, state, and federal agencies.

**Explain the things you will do in the future to maintain project outcomes:**

Year	Source of Funds	Step 1	Step 2	Step 3
Annual	Watershed District	Monitoring and Maintenance of Channel Restoration		
Annual	Watershed District	Monitoring and Maintenance of Restoration in Acquired Lands		

**Activity Details:**

If funded, this proposal will meet all applicable criteria set forth in MS 97A.056 - **Yes**

Will local government approval be sought prior to acquisition - **Yes**

Is the land you plan to acquire free of any other permanent protection - **Yes**

Is this land currently open for hunting and fishing - **No**

Will the land be open for hunting and fishing after completion - **Yes**

All waters will be open for fishing. Any land purchased in fee will be open to hunting. Land with easement acquisitions will likely remain closed to hunting.

Will the eased land be open for public use - **No**

Is the land you plan to acquire free of any other permanent protection - **Yes**

### Accomplishment Timeline:

Activity	Approximate Date Completed
Finalize Acquisition and Marketing Plan with Partners	September, 2015
Marketing and Outreach to Landowners within Corridor	October, 2015
Land Acquisition	June, 2019

### Federal Funding:

Do you anticipate federal funds as a match for this program - **Yes**

Are the funds confirmed - **No**

What is the approximate date you anticipate receiving confirmation of the federal funds - **June, 2015**

### Outcomes:

#### Programs in prairie region:

- Key core parcels are protected for fish, game and other wildlife *This funding request will target acquisition to Reach C of the corridor. This reach was selected for this part of Phase 1 due to expressed landowner interest and the high percentage of cultivated land within the reach. Of the 3,235 acres within this reach, 2,647 acres (82%) are classified as cultivated crops. The other primary land classifications within this reach are woody wetland (275 acres) and open water (154 acres). While land acquisition will be targeted to Reach C, any other opportunities to acquire and protect lands within the main corridor (A-F) will also be considered.*

# Budget Spreadsheet

**Total Amount of Request: \$4,150,000**

## Budget and Cash Leverage

Budget Name	LSOHC Request	Anticipated Leverage	Leverage Source	Total
Personnel	\$0	\$0		\$0
Contracts	\$540,200	\$100,000	NRCS	\$640,200
Fee Acquisition w/ PILT	\$0	\$0		\$0
Fee Acquisition w/o PILT	\$1,964,100	\$0		\$1,964,100
Easement Acquisition	\$1,312,100	\$800,000	NRCS	\$2,112,100
Easement Stewardship	\$0	\$0		\$0
Travel	\$0	\$0		\$0
Professional Services	\$333,600	\$75,000	NRCS	\$408,600
Direct Support Services	\$0	\$0		\$0
DNR Land Acquisition Costs	\$0	\$0		\$0
Capital Equipment	\$0	\$0		\$0
Other Equipment/Tools	\$0	\$0		\$0
Supplies/Materials	\$0	\$0		\$0
DNR IDP	\$0	\$0		\$0
<b>Total</b>	<b>\$4,150,000</b>	<b>\$975,000</b>	-	<b>\$5,125,000</b>

Amount of Request: \$4,150,000  
 Amount of Leverage: \$975,000  
 Leverage as a percent of the Request: 23.49%

## Output Tables

**Table 1a. Acres by Resource Type**

Type	Wetlands	Prairies	Forest	Habitats	Total
Restore	0	0	0	0	0
Protect in Fee with State PILT Liability	0	0	0	0	0
Protect in Fee W/O State PILT Liability	126	476	20	94	716
Protect in Easement	85	317	15	63	480
Enhance	0	0	0	0	0
Total	211	793	35	157	1,196

**Table 1b. How many of these Prairie acres are Native Prairie?**

Type	Native Prairie
Restore	0
Protect in Fee with State PILT Liability	0
Protect in Fee W/O State PILT Liability	0
Protect in Easement	0
Enhance	0
Total	0

**Table 2. Total Requested Funding by Resource Type**

Type	Wetlands	Prairies	Forest	Habitats	Total
Restore	\$0	\$0	\$0	\$0	\$0
Protect in Fee with State PILT Liability	\$0	\$0	\$0	\$0	\$0
Protect in Fee W/O State PILT Liability	\$436,100	\$1,654,300	\$70,500	\$327,000	\$2,487,900
Protect in Easement	\$294,100	\$1,099,500	\$51,200	\$217,300	\$1,662,100
Enhance	\$0	\$0	\$0	\$0	\$0
Total	\$730,200	\$2,753,800	\$121,700	\$544,300	\$4,150,000

**Table 3. Acres within each Ecological Section**

Type	Metro/Urban	Forest/Prairie	SEForest	Prairie	Northern Forest	Total
Restore	0	0	0	0	0	0
Protect in Fee with State PILT Liability	0	0	0	0	0	0
Protect in Fee W/O State PILT Liability	0	0	0	716	0	716
Protect in Easement	0	0	0	480	0	480
Enhance	0	0	0	0	0	0
Total	0	0	0	1,196	0	1,196

**Table 4. Total Requested Funding within each Ecological Section**

Type	Metro/Urban	Forest/Prairie	SEForest	Prairie	Northern Forest	Total
Restore	\$0	\$0	\$0	\$0	\$0	\$0
Protect in Fee with State PILT Liability	\$0	\$0	\$0	\$0	\$0	\$0
Protect in Fee W/O State PILT Liability	\$0	\$0	\$0	\$2,487,900	\$0	\$2,487,900
Protect in Easement	\$0	\$0	\$0	\$1,662,100	\$0	\$1,662,100
Enhance	\$0	\$0	\$0	\$0	\$0	\$0
Total	\$0	\$0	\$0	\$4,150,000	\$0	\$4,150,000

**Table 5. Average Cost per Acre by Resource Type**

Type	Wetlands	Prairies	Forest	Habitats
Restore	\$0	\$0	\$0	\$0
Protect in Fee with State PILT Liability	\$0	\$0	\$0	\$0
Protect in Fee W/O State PILT Liability	\$3,461	\$3,475	\$3,525	\$3,479
Protect in Easement	\$3,460	\$3,468	\$3,413	\$3,449
Enhance	\$0	\$0	\$0	\$0

**Table 6. Average Cost per Acre by Ecological Section**

Type	Metro/Urban	Forest/Prairie	SE Forest	Prairie	Northern Forest
Restore	\$0	\$0	\$0	\$0	\$0
Protect in Fee with State PILT Liability	\$0	\$0	\$0	\$0	\$0
Protect in Fee W/O State PILT Liability	\$0	\$0	\$0	\$3,475	\$0
Protect in Easement	\$0	\$0	\$0	\$3,463	\$0
Enhance	\$0	\$0	\$0	\$0	\$0

**Target Lake/Stream/River Feet or Miles**

## Parcel List

### Section 1 - Restore / Enhance Parcel List

No parcels with an activity type restore or enhance.

### Section 2 - Protect Parcel List



Norman

Name	TRDS	Acres	Est Cost	Existing Protection?	Hunting?	Fishing?
ADA ELEVATOR CO - PRIMARY	14347203	46	\$212,435	No	Limited	Full
ADA ELEVATOR CO - PRIMARY	14447234	75	\$392,312	No	Limited	Full
ADA ELEVATOR CO - PRIMARY	14447235	117	\$625,792	No	Limited	Full
BORGEN/CHARLES A/JR - PRIMARY	14447226	7	\$37,232	No	Limited	Full
HANSON/CLIFFORD/INC. - PRIMARY	14347203	51	\$298,961	No	Limited	Full
HEITMAN/DWIGHT A & MARY L - PRIMARY	14446230	28	\$54,066	No	Limited	Full
HEITMAN/DWIGHT A & MARY L - PRIMARY	14447225	3	\$2,896	No	Limited	Full
HEITMAN/DWIGHT A & MARY L - PRIMARY	14447225	4	\$10,108	No	Limited	Full
HEITMAN/DWIGHT A & MARY L - PRIMARY	14447225	12	\$60,435	No	Limited	Full
HEITMAN/DWIGHT A & MARY L - PRIMARY	14447225	56	\$267,953	No	Limited	Full
HEITMAN/HOWARD & DELORES - PRIMARY	14447225	7	\$25,240	No	Limited	Full
HEITMAN/HOWARD & DELORES - PRIMARY	14447225	33	\$194,507	No	Limited	Full
HEITMAN/HOWARD & DELORES - PRIMARY	14447236	63	\$372,560	No	Limited	Full
LEE/MARGARET A/TRUST - PRIMARY	14347204	90	\$597,550	No	Limited	Full
LEE/WARREN & SHARON - PRIMARY	14347203	6	\$31,958	No	Limited	Full
LEE/WARREN & SHARON - PRIMARY	14447225	33	\$219,374	No	Limited	Full
LEE/WARREN & SHARON - PRIMARY	14447236	7	\$22,443	No	Limited	Full
LEE/WAYNE & LYNN - PRIMARY	14347203	45	\$212,025	No	Limited	Full
LEE/WAYNE & LYNN - PRIMARY	14347203	64	\$359,944	No	Limited	Full
LEE/WILLIAM R/TRUST - PRIMARY	14347203	31	\$131,434	No	Limited	Full
NELSON/DAVID ARTHUR - PRIMARY	14447236	24	\$163,818	No	Limited	Full
NELSON/DAVID ARTHUR - PRIMARY	14446230	35	\$90,736	No	Limited	Full
NELSON/DAVID ARTHUR - PRIMARY	14446231	46	\$208,430	No	Limited	Full
NELSON/DAVID ARTHUR - PRIMARY	14447225	30	\$152,099	No	Limited	Full
PAXTON/ARLO D - PRIMARY	14447235	51	\$349,319	No	Limited	Full
PLATT/ROBERT E - PRIMARY	14447225	42	\$49,552	No	Limited	Full
PLATT/ROBERT E - PRIMARY	14447225	3	\$21,310	No	Limited	Full
PLATT/ROBERT E - PRIMARY	14447225	10	\$45,060	No	Limited	Full
THIEL/WALTER A/JR ET AL - PRIMARY	14347203	9	\$24,396	No	Limited	Full
TOMMERDAHL/WILLIAM D - PRIMARY	14447235	31	\$148,276	No	Limited	Full
TOMMERDAHL/WILLIAM D - PRIMARY	14447235	31	\$158,437	No	Limited	Full
TUFTE/BRUCE, BLAIR & BRENT - PRIMARY	14347202	33	\$89,498	No	Limited	Full
TUFTE/BRUCE, BLAIR & BRENT - PRIMARY	14347203	59	\$185,729	No	Limited	Full

VIK/EUGENE G - PRIMARY	14447236	83	\$482,319	No	Limited	Full
VIK/EUGENE G - PRIMARY	14447235	126	\$691,288	No	Limited	Full

### Section 2a - Protect Parcel with Bldgs

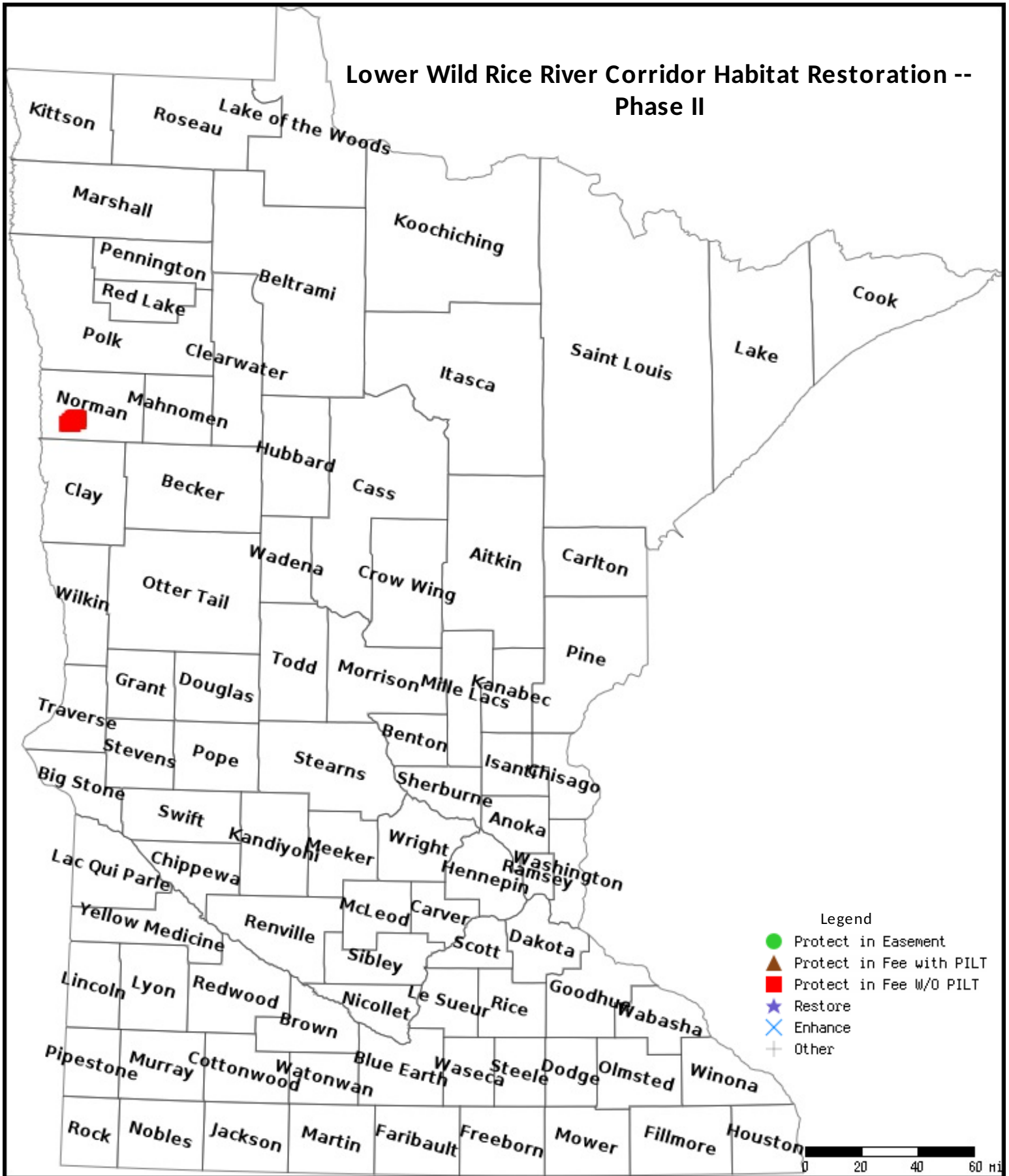
No parcels with an activity type protect and has buildings.

### Section 3 - Other Parcel Activity

No parcels with an other activity type.

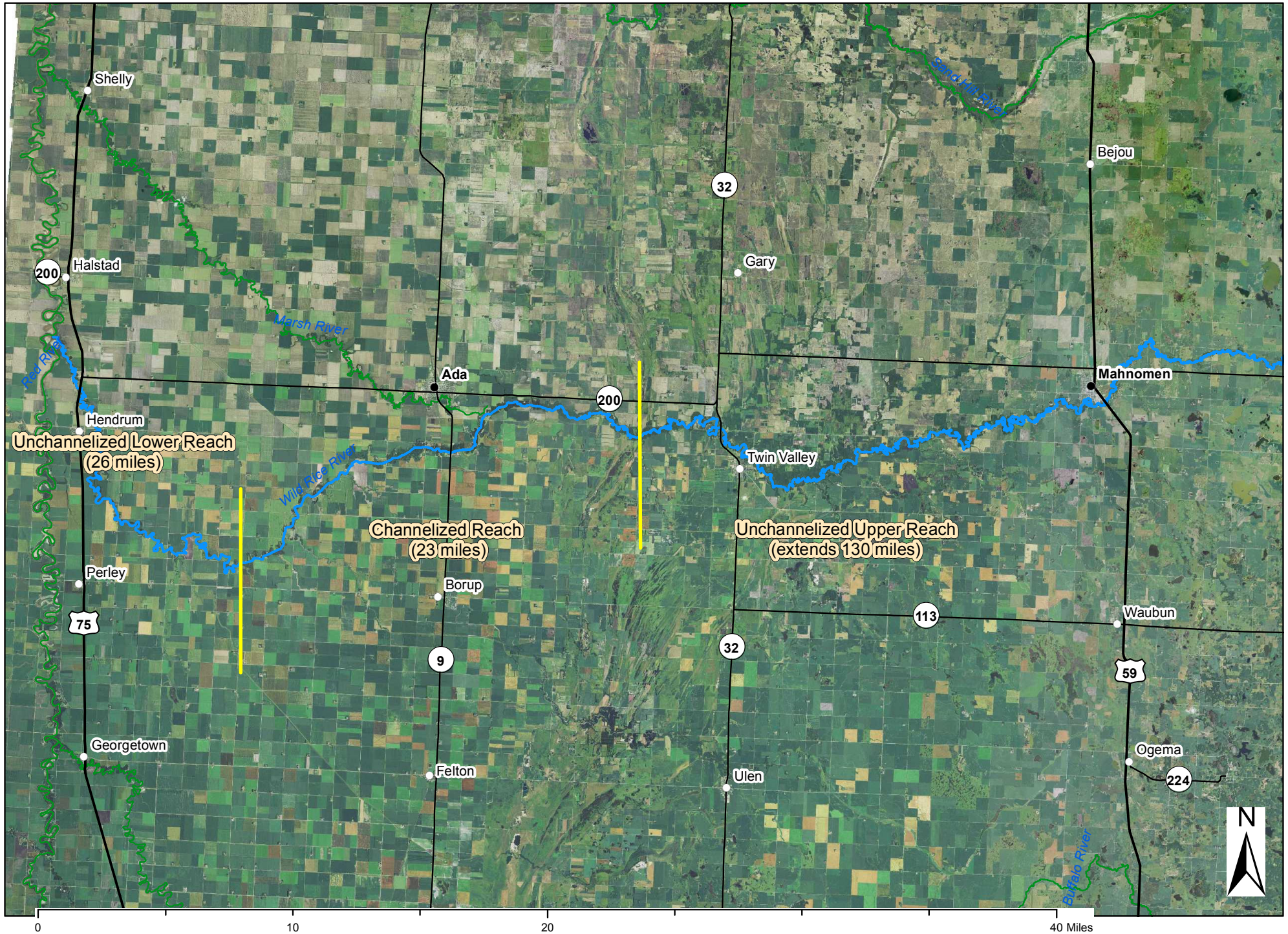
# Parcel Map

## Lower Wild Rice River Corridor Habitat Restoration -- Phase II

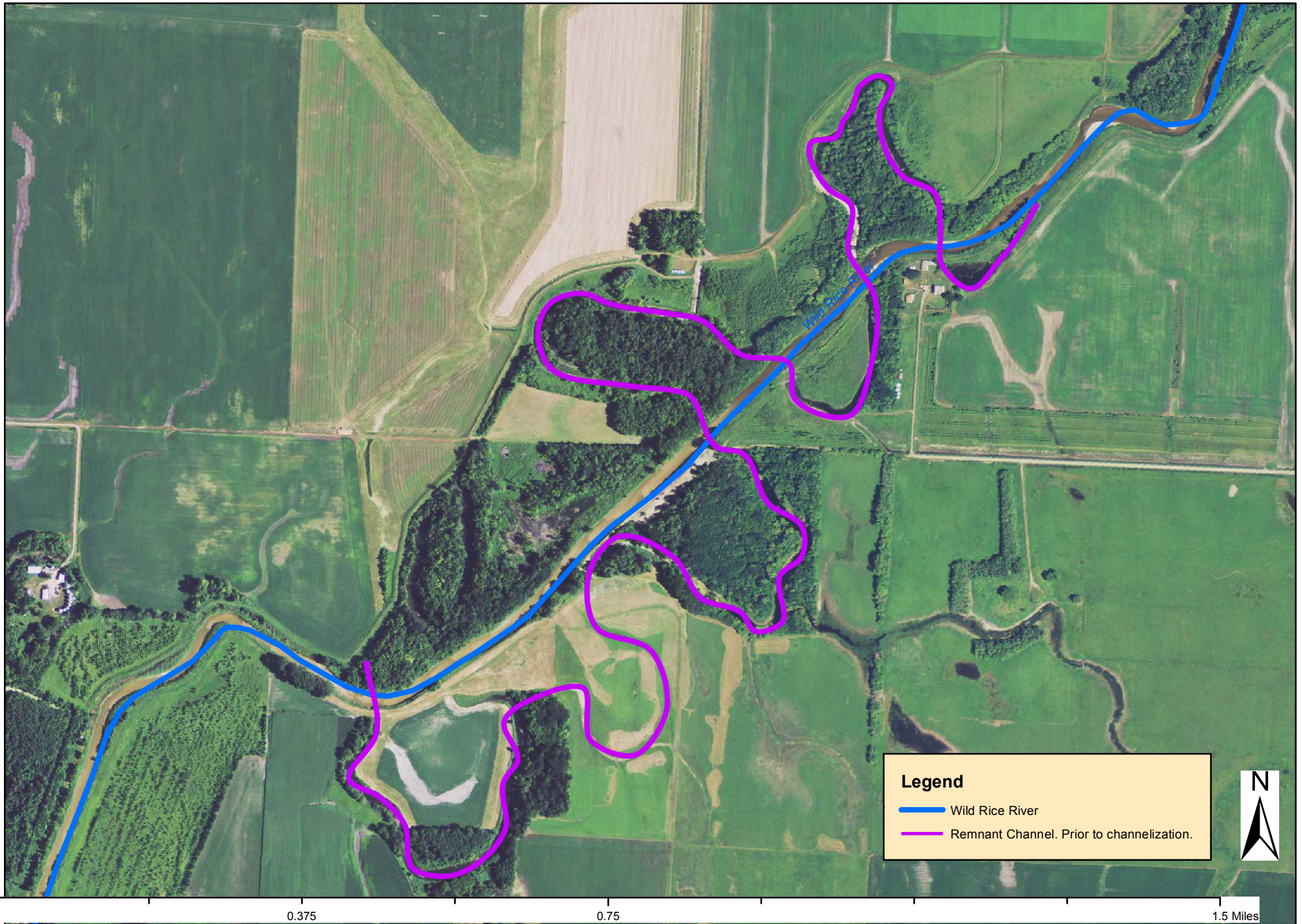


Data Generated From Parcel List

# Wild Rice River Corridor Restoration Overview



Wild Rice River straightened channel and remnant channel oxbows.





## Red River Watershed Management Board

May 26, 2015

Board of Managers  
Wild Rice Watershed District  
11 5th Ave. E  
Ada, MN 56510

RE: Support for Lessard-Sams Outdoor Heritage Council "Lower Wild Rice River Project Stream Restoration Project"

Dear Board of Managers:

Please accept this letter acknowledging the Red River Watershed Management Board's (RRWMB's) support for the Lessard-Sams Outdoor Heritage Council "Lower Wild Rice River Project Stream Restoration Project" as proposed by Kevin Ruud, Administrator - Wild Rice Watershed District.

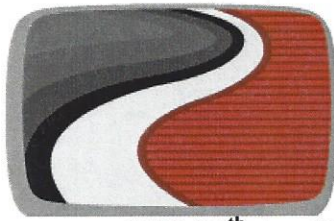
We anticipate that this project will help our board in its mission to institute, coordinate and finance projects and programs to alleviate flooding and assure the beneficial use of water in the watershed of the Red River and its tributaries. As a member of the Red River Basin Flood Damage Reduction Work Group, the RRWMB has significant interest in supporting projects that seek to achieve the flood damage reduction and natural resource enhancement goals included in the 1998 Mediation Agreement. The stream restoration component of this project is consistent with the objective of the Work Group to incorporate natural resource enhancements within flood damage reduction projects.

The RRWMB offers our support for this proposal in order to advance our efforts to utilize comprehensive approaches for flood damage reduction and natural resource enhancements in the Red River Basin.

Sincerely,

A handwritten signature in black ink that reads "Naomi L. Goral".

Naomi L. Goral  
Administrator



# RED RIVER RETENTION AUTHORITY

1120 28<sup>th</sup> Ave N - Suite B - West, Fargo, ND 58102 - Phone: 701-356-6644

June 4, 2014

Board of Managers  
Wild Rice Watershed District  
11 5<sup>th</sup> Ave. E  
Ada, MN 56510

RE: Lower Wild Rice River Project – Stream Restoration – Support

Dear Watershed Board,

The Red River Retention Authority and its members, we would like to offer our support for this stream restoration project to enhance wildlife habitat and improve water quality. This project as planned will be win for all; – people – plants – animals and all other creatures.

It is wonderful when we can marry significant environmental improvements with returning a stream to its more natural state and its natural floodplain. Funding for such projects is difficult to obtain. It is even more difficult from the local financing level to add these type of habitat and wildlife improvements as well. The Outdoor Heritage Council funding will be essential to restore the meandering stream features and habitat corridor in the plan.

We certainly hope the Outdoor Heritage Council Board can see the merits and fund your project request. We fully support your application for Lessard-Sams Outdoor Heritage Council funding. We believe the citizens of Minnesota, when they voted for this funding mechanism would concur this project would be a worthy investment of these funds and the project is of the type they envisioned for the use of these funds.

If we can offer additional assistance or support, please let us know.

Sincerely,

A handwritten signature in black ink, appearing to read "Pat Downs", written in a cursive style.

Pat Downs, Executive Director  
Red River Retention Authority



May 26, 2015

Lower Wild Rice River Corridor Restoration Project  
Board of Mangers  
Wild Rice Watershed District  
11 5<sup>th</sup> Avenue East  
Ada, MN 56510

Dear Watershed Board:

The USDA Natural Resources Conservation Service appreciates the continued efforts of the Wild Rice River Watershed District to address water resources and other related natural resources along the Wild Rice River in Norman County. With the 2014 Farm Bill and specifically the Agricultural Conservation Easement Program, the NRCS looks forward to working with the Watershed District in improving water quality, reducing the impacts of annual flooding and enhancing riparian health and wildlife habitat.

Through sound resource planning this project provides for many opportunities, notwithstanding the river's ability to better access its floodplain and improve the quality of life of those who live and farm next to it. Returning the river to a more natural state will provide for countless environmental benefits to aquatic life and improved water quality downstream.

The NRCS looks forward to discussions with your Board and the other partnering agencies and groups on how to implement this restoration project. The NRCS is encouraged by your application to the Outdoor Heritage Council for Lessard-Sams Outdoor Heritage funds. The Council's funding will be an essential component to restoring the river and improving the riparian corridor.

Sincerely,

CATHEE PULLMAN  
State Conservationist

RECEIVED

6-1-15





2011 Freshwater Fishing Hall of Fame Inductee

June 11, 2014

Board of Managers  
Wild Rice Watershed District  
11 5<sup>th</sup> Avenue East  
Ada, MN 56510

Dear Board of Managers;

Please accept this letter of support for the Lessard-Sams Outdoor Heritage Council "Lower Wild Rice River Stream Restoration Project" as proposed by Kevin Ruud, Administrator – Wild Rice Watershed District

As an organization with the mission "to promote sportsmanship, conservation & education with respect to walleye fishing", FM Walleyes Unlimited, Inc. sees the benefit of habitat restoration in supporting healthy populations of all fish species. We therefore, wish to offer our support for this proposal and the work outlined within to restore sections of the Wild Rice River in Western Minnesota to natural habitat, benefiting the entire Red River Basin.

Sincerely,

Kyle Agre, Vice President  
Representing, FM Walleyes Unlimited, Inc.  
P.O. Box 1077  
Moorhead, MN 56560

*"To Promote Sportsmanship, Conservation & Education  
With Respect To Walleye Fishing"*

Parcel Name	County	Township	Range	Direction	Section	TRDS	# of Acres
ADA ELEVATOR CO - PRIMARY	Norman	143	47	2	3		46.32
HANSON/CLIFFORD/INC.- PRIMARY	Norman	143	47	2	3		50.73
LEE/WARREN & SHARON- PRIMARY	Norman	143	47	2	3		5.73
LEE/WAYNE & LYNN- PRIMARY	Norman	143	47	2	3		45.06
LEE/WAYNE & LYNN- PRIMARY	Norman	143	47	2	3		63.77
LEE/WILLIAM R/TRUST- PRIMARY	Norman	143	47	2	3		31.02
THIEL/WALTER A/JR ET AL- PRIMARY	Norman	143	47	2	3		8.82
TUFTE/BRUCE, BLAIR & BRENT- PRIMARY	Norman	143	47	2	3		59.1
TUFTE/BRUCE, BLAIR & BRENT- PRIMARY	Norman	143	47	2	2		32.72
ADA ELEVATOR CO- PRIMARY	Norman	144	47	2	34		75.08
ADA ELEVATOR CO- PRIMARY	Norman	144	47	2	35		116.77
PAXTON/ARLO D- PRIMARY	Norman	144	47	2	35		51.07
TOMMERDAHL/WILLIAM D- PRIMARY	Norman	144	47	2	35		30.71
TOMMERDAHL/WILLIAM D- PRIMARY	Norman	144	47	2	35		30.62
VIK/EUGENE G- PRIMARY	Norman	144	47	2	35		126.23
HEITMAN/HOWARD & DELORES- PRIMARY	Norman	144	47	2	36		62.77
LEE/WARREN & SHARON- PRIMARY	Norman	144	47	2	36		7.05
NELSON/DAVID ARTHUR - PRIMARY	Norman	144	47	2	36		23.95
VIK/EUGENE G - PRIMARY	Norman	144	47	2	36		82.63
HEITMAN/DWIGHT A & MARY L- PRIMARY	Norman	144	47	2	25		2.53
HEITMAN/DWIGHT A & MARY L- PRIMARY	Norman	144	47	2	25		56.49
HEITMAN/DWIGHT A & MARY L- PRIMARY	Norman	144	47	2	25		12.24
HEITMAN/DWIGHT A & MARY L- PRIMARY	Norman	144	47	2	25		3.78
HEITMAN/HOWARD & DELORES- PRIMARY	Norman	144	47	2	25		32.57
HEITMAN/HOWARD & DELORES- PRIMARY	Norman	144	47	2	25		6.89
LEE/WARREN & SHARON- PRIMARY	Norman	144	47	2	25		32.97
NELSON/DAVID ARTHUR- PRIMARY	Norman	144	47	2	25		29.57
PLATT/ROBERT E- PRIMARY	Norman	144	47	2	25		3.4
PLATT/ROBERT E- PRIMARY	Norman	144	47	2	25		9.61
PLATT/ROBERT E - PRIMARY	Norman	144	47	2	25		42.08
NELSON/DAVID ARTHUR- PRIMARY	Norman	144	46	2	30		34.99
HEITMAN/DWIGHT A & MARY L- PRIMARY	Norman	144	46	2	30		27.86
NELSON/DAVID ARTHUR- PRIMARY	Norman	144	46	2	31		46.49
BORGEN/CHARLES A/JR- PRIMARY	Norman	144	47	2	26		6.91
LEE/MARGARET A/TRUST- PRIMARY	Norman	143	47	2	4		89.61

1388.14

Budgeting Estimated Cost	Description	Activity	Existing Protection?	Open to hunting per State of Minnesota Regulations?
212435.2	SW 1/4 NE 1/4 N OF WILD RICE RIVER	Restore	No	Limited
298961.2	SE1/4 (LESS BEG. 1025 FT. W. OF NE C)	Restore	No	Limited
31,958	SW1/4NW1/4 & GOV'T LOT 4 LESS (A F)	Restore	No	Limited
212024.8	SW1/4NW1/4 & NW1/4SW1/4 LESS (A)	Restore	No	Limited
359943.6	SE1/4NW1/4; & E1/2SW1/4	Restore	No	Limited
131434.4	SW1/4SW1/4	Restore	No	Limited
24396	BEG. 1025 FT. W OF NE COR SE1/4, S 5	Restore	No	Limited
185728.8	SE1/4NE1/4, E RIVER & LOT 1	Restore	No	Limited
89497.6	W2 SW4; SW4 NW4 & LOT 4; LESS TRA	Restore	No	Limited
392312	E 1/2	Restore	No	Limited
625791.6	NW1/4; SW1/4SW1/4 & N1/2SW1/4 (I)	Restore	No	Limited
349318.8	E1/2SE1/4	Restore	No	Limited
158437.2	N1/2NE1/4	Restore	No	Limited
148276	SW1/4NE1/4	Restore	No	Limited
691288.4	SE1/4NE1/4;SE1/4SW1/4 & W1/2SE1/	Restore	No	Limited
372559.6	W1/2SE1/4,SW1/4NE1/4,NW1/4NE1/	Restore	No	Limited
22442.8	THAT PART OF NW1/4NW1/4 LYING N	Restore	No	Limited
163818	NE1/4NE1/4	Restore	No	Limited
482318.8	SW1/4NW1/4 & W1/2SW1/4	Restore	No	Limited
2895.6	SW1/4NE1/4 & SE1/4NW1/4 LESS PAR	Restore	No	Limited
267953.2	S1/2NE1/4SW1/4; W1/2SW1/4SE1/4;	Restore	No	Limited
60435.2	E1/2SE1/4 (N WILD RICE RIVER)	Restore	No	Limited
10108	N1/2NE1/4SW1/4SE1/4	Restore	No	Limited
194506.8	THAT PART OF SE1/4SW1/4 & W1/2SV	Restore	No	Limited
25239.6	THAT PART OF SW1/4SW1/4 LYING S C	Restore	No	Limited
219374	SW1/4SW1/4 (LESS THAT PART LYING	Restore	No	Limited
152098.8	SE1/4SW1/4SE1/4 & E1/2SE1/4 (S WIL	Restore	No	Limited
21310.4	COM AT SE COR OF NW1/4, W 132 FT	Restore	No	Limited
45060.4	W 1/2 N 1/2 NE 1/4 SW 1/4	Restore	No	Limited
49552	NW1/4SE1/4 & E1/2N1/2NE1/4 SW1/	Restore	No	Limited
90736.4	THAT PORTION E1/2SW1/4 & LOT 4 LY	Restore	No	Limited
54066.4	LOT 3 & THAT PORTION E1/2SW1/4 &	Restore	No	Limited
208430	E1/2NE1/4,SW1/4NE1/4, NE1/4NW1/	Restore	No	Limited
37232.4	E1/2	Restore	No	Limited
597550	SE 1/4	Restore	No	Limited



